



# Arnold & Porter Executive Order Task Force

## Co-Chairs

---



**Paul J. Fishman**

Partner  
Newark; New York  
[paul.fishman@arnoldporter.com](mailto:paul.fishman@arnoldporter.com)

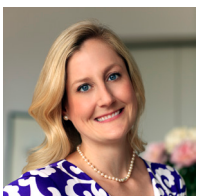
+1 973.776.1901  
+1 212.836.8152



**Teresa (Terry) L. Johnson**

Partner  
San Francisco  
[teresa.johnson@arnoldporter.com](mailto:teresa.johnson@arnoldporter.com)

+1 415.471.3157



**Eugenia E. Pierson**

Senior Health Policy Advisor  
Washington, D.C.  
[eugenia.pierson@arnoldporter.com](mailto:eugenia.pierson@arnoldporter.com)

+1 202.942.6564

## Antitrust (Competition, Consumer Protection, Market Regulation)

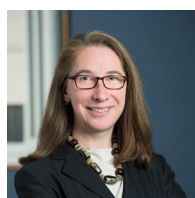
---



**William Hallett Efron**

Partner  
New York  
[william.efron@arnoldporter.com](mailto:william.efron@arnoldporter.com)

+1 212.836.7121



**Sonia Kuester Pfaffenroth**

Partner  
Washington, D.C.  
[sonia.pfaffenroth@arnoldporter.com](mailto:sonia.pfaffenroth@arnoldporter.com)

+1 202.942.6831

## Appellate & Supreme Court (APA, Constitutional Law, Judicial Review, Policy Analysis)

---



**John P. Elwood**

Partner  
Washington, D.C.  
[john.elwood@arnoldporter.com](mailto:john.elwood@arnoldporter.com)

+1 202.942.5992



**Elisabeth S. Theodore**

Partner  
Washington, D.C.  
[elisabeth.theodore@arnoldporter.com](mailto:elisabeth.theodore@arnoldporter.com)

+1 202.942.5891



**Andrew Tutt**

Counsel  
Washington, D.C.  
[andrew.tutt@arnoldporter.com](mailto:andrew.tutt@arnoldporter.com)

+1 202.942.5242

## Commercial Litigation (Disputes, Challenges)

---



**Ian S. Hoffman**

Partner  
Washington, D.C.  
[ian.hoffman@arnoldporter.com](mailto:ian.hoffman@arnoldporter.com)  
+1 202.942.6406

## Congressional Investigations

---



**Paul J. Fishman**

Partner  
Newark; New York  
[paul.fishman@arnoldporter.com](mailto:paul.fishman@arnoldporter.com)  
+1 973.776.1901  
+1 212.836.8152

## Consumer Product Safety (Regulatory Compliance, Risk Management)

---



**Michelle F. Gillice**

Partner  
Washington, D.C.  
[michelle.gillice@arnoldporter.com](mailto:michelle.gillice@arnoldporter.com)  
+1 202.942.6589

## Corporate & Finance (Corporate Governance, DEI, ESG)

---



**Teresa (Terry) L. Johnson**

Partner  
San Francisco  
[teresa.johnson@arnoldporter.com](mailto:teresa.johnson@arnoldporter.com)  
+1 415.471.3157

## Energy (Regulatory Compliance, Permitting, Commercial Agreements)

---



**Sara Mouldoux Glover**

Partner  
Denver  
[sara.glover@arnoldporter.com](mailto:sara.glover@arnoldporter.com)  
+1 303.863.2332

## Environmental (Regulatory Compliance, Environmental Justice)

---



**Stacey Halliday**

Partner  
Washington, D.C.  
[stacey.halliday@arnoldporter.com](mailto:stacey.halliday@arnoldporter.com)  
+1 202.942.5130

## Financial Services (Regulatory Compliance)

---



### James P. Bergin

Partner  
New York  
[james.bergin@arnoldporter.com](mailto:james.bergin@arnoldporter.com)  
+1 212.836.7430

## Government Contracts (National Security, Federal Contracts, Grants)

---



### Kristen E. Ittig

Partner  
Washington, D.C.  
[kristen.ittig@arnoldporter.com](mailto:kristen.ittig@arnoldporter.com)  
+1 202.942.6679

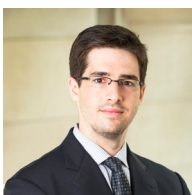


### Nicholas L. Townsend

Counsel  
Washington, D.C.  
[nicholas.townsend@arnoldporter.com](mailto:nicholas.townsend@arnoldporter.com)  
+1 202.942.5249

## Intellectual Property (AI, Technology)

---



### William Z. Loudon

Counsel  
Washington, D.C.  
[william.loudon@arnoldporter.com](mailto:william.loudon@arnoldporter.com)  
+1 202.942.6909

## International Trade (Tariffs)

---

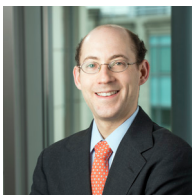


### Lynn Fischer Fox

Partner  
Washington, D.C.  
[lynn.fischerfox@arnoldporter.com](mailto:lynn.fischerfox@arnoldporter.com)  
+1 202.942.5601

## Labor & Employment (DEI, Compliance, Social Issues)

---



### Joshua F. Alloy

Counsel  
Washington, D.C.  
[joshua.alloy@arnoldporter.com](mailto:joshua.alloy@arnoldporter.com)  
+1 202.942.5895



### Dipanwita Deb Amar

Partner  
San Francisco  
[dipanwita.amar@arnoldporter.com](mailto:dipanwita.amar@arnoldporter.com)  
+1 415.471.3141

## Legislative & Public Policy (Investigations, Policy Analysis, Intergovernmental Relations)

---



### Eugenia E. Pierson

Senior Health Policy Advisor  
Washington, D.C.  
[eugenia.pierson@arnoldporter.com](mailto:eugenia.pierson@arnoldporter.com)  
+1 202.942.6564

## Life Sciences & Healthcare (Regulatory Compliance, AI, Funding)

---



**Pari R. Mody**  
Partner  
Washington, D.C.  
[pari.mody@arnoldporter.com](mailto:pari.mody@arnoldporter.com)  
+1 202.942.6575



**Eva Temkin**  
Partner  
Washington, D.C.  
[eva.temkin@arnoldporter.com](mailto:eva.temkin@arnoldporter.com)  
+1 202.942.5123

## Privacy, Cybersecurity & Data Strategy (Regulatory Compliance, AI)

---



**Sheena Thomas**  
Counsel  
Washington, D.C.  
[sheena.thomas@arnoldporter.com](mailto:sheena.thomas@arnoldporter.com)  
+1 202.942.5099

## Pro Bono

---



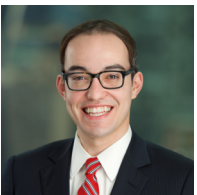
**Daniel A. Cantor**  
Partner  
Washington, D.C.  
[daniel.cantor@arnoldporter.com](mailto:daniel.cantor@arnoldporter.com)  
+1 202.942.5765



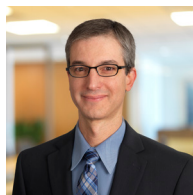
**Lucy S. McMillan**  
Chief Pro Bono  
Counsel New York  
[lucy.mcmillan@arnoldporter.com](mailto:lucy.mcmillan@arnoldporter.com)  
+1 212.836.7379

## Product Liability Litigation (Consumer Protection, Liability Concerns)

---



**Alexander Cousins**  
Partner  
New York  
[alexander.cousins@arnoldporter.com](mailto:alexander.cousins@arnoldporter.com)  
+1 212.836.7219



**Paul W. Rodney**  
Counsel  
Denver  
[paul.rodney@arnoldporter.com](mailto:paul.rodney@arnoldporter.com)  
+1 303.863.2319

## Securities Enforcement & Litigation (Regulatory Compliance, Enforcement Actions)

---



**Christian D. H. Schultz**  
Partner  
Washington, D.C.  
[christian.schultz@arnoldporter.com](mailto:christian.schultz@arnoldporter.com)  
+1 202.942.6917



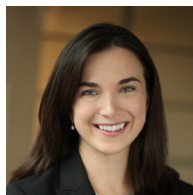
**Stephanna F. Sotkowski**  
Partner  
Chicago  
[stephanna.sotkowski@arnoldporter.com](mailto:stephanna.sotkowski@arnoldporter.com)  
+1 312.583.2354

## Tax-Exempt (Compliance, Funding)

---



**James P. Joseph**  
Partner  
Washington, D.C.  
[james.joseph@arnoldporter.com](mailto:james.joseph@arnoldporter.com)  
+1 202.942.5355



**Bridget M. Weiss**  
Partner  
Washington, D.C.; San Francisco  
[bridget.weiss@arnoldporter.com](mailto:bridget.weiss@arnoldporter.com)  
+1 202.942.5839  
+1 415.471.3100

## Telecommunications (Regulatory Compliance)

---



**Maureen R. Jeffreys**

Partner  
Washington, D.C.  
[maureen.jeffreys@arnoldporter.com](mailto:maureen.jeffreys@arnoldporter.com)  
+1 202.942.6608

## White Collar Defense & Investigations (Government Investigations, Enforcement Defense)

---



**Deborah A. Curtis**

Partner  
Washington, D.C.  
[deborah.curtis@arnoldporter.com](mailto:deborah.curtis@arnoldporter.com)  
+1 202.942.5081



**Michael Kim Krouse**

Partner  
New York  
[michael.krouse@arnoldporter.com](mailto:michael.krouse@arnoldporter.com)  
+1 212.836.7750